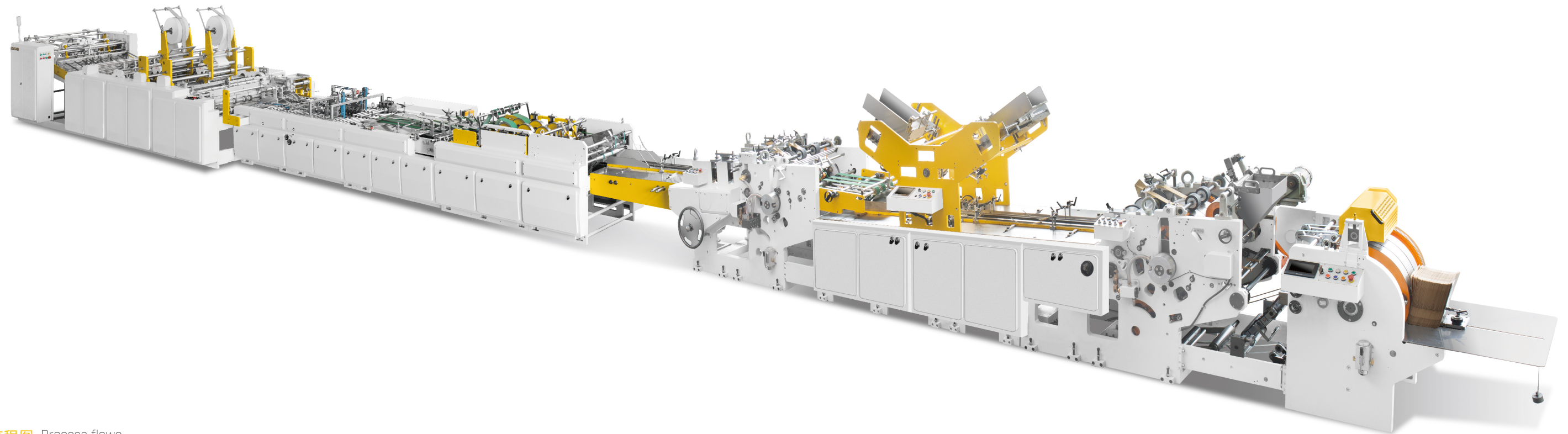


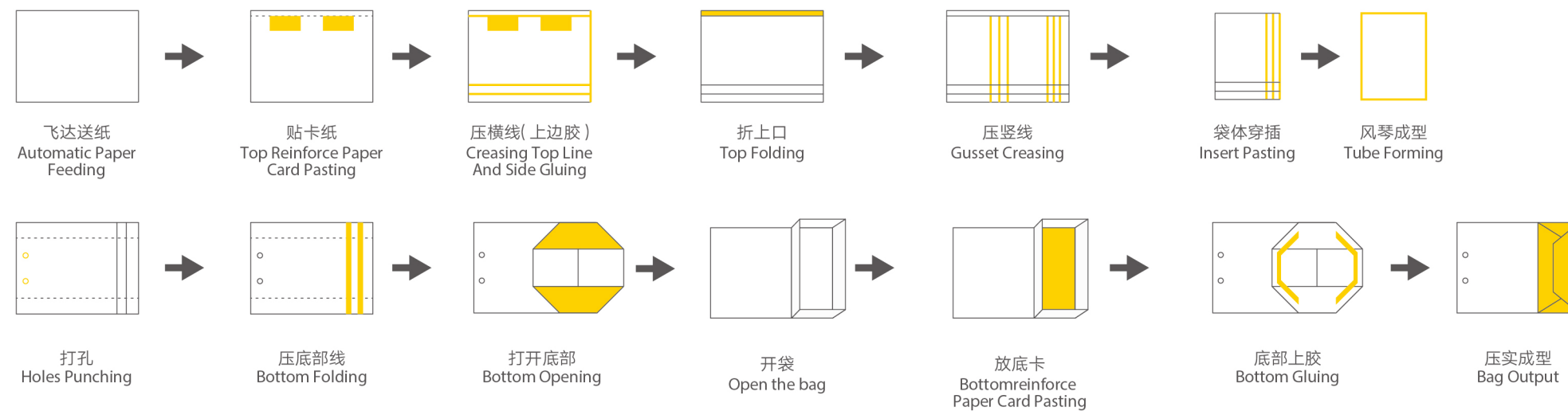
# TB 系列 | Series 自动纸袋机

## 350TB/450TB

Automatic Paper Bag Making Machine Function With  
Both Top Reinforce Paper Card Pasting And Bottom Reinforce Paper Card Pasting



工艺流程图 Process flowa



# TB 系列

Series 自动纸袋机

350TB/450TB

Automatic Paper Bag Making Machine Function With  
Both Top Reinforce Paper Card Pasting And Bottom Reinforce Paper Card Pasting

## 主要技术参数 Main Technical Parameters

型号 Model	350TB	450TB
袋面宽度Paper Bag Width	200 -350mm	200 -450mm
原纸宽度Paper Sheet Width	530 × 1040 mm	600 -1240mm
原纸长度 Paper Sheet Length	290 × 600mm	320 - 600 mm
A.牛皮纸 克重	A .White / Brown Kraft Paper : 120-250g / m <sup>2</sup>	A .White / Brown Kraft Paper : 120-250g / m <sup>2</sup>
B.铜版纸+PP覆膜 克重	B. Art Paper + PP Laminating : 157-230g / m <sup>2</sup>	B. Art Paper + PP Laminating : 157-230g / m <sup>2</sup>
C.白卡纸+PP覆膜 克重	C. White Cardboard + PP Laminating : 150-250g / m <sup>2</sup>	C. White Cardboard + PP Laminating : 150-250g / m <sup>2</sup>
D.灰版纸+PP覆膜 克重	D .Grey Paperboard + PP Laminating : 150-300g / m <sup>2</sup>	D .Grey Paperboard + PP Laminating : 150-300g / m <sup>2</sup>
建议纸张200克以上需模切	Recommend that paper thickness above 200gsm die cutting before operation)	Recommend that paper thickness above 200gsm die cutting before operation)
胶水类型 Glue Type	水胶、热熔胶系统 Water Glue/Hot Glue System	水胶、热熔胶系统 Water Glue/Hot Glue System
贴片纸卷直径Top Reinforce Paper Roll Diameter	φ600mm	φ600mm
贴片卷纸克重Top Reinforce Roll Paper Weight	100-350 g	100-350g
贴片纸宽度Top Reinforce Roll Paper Width	170-340mm	190-350 mm
贴片切断长度Top Reinforce Paper Cutting Length	20 - 50mm	20-50mm
风琴高度 Paper Bag Bottom/Gusset	70-150mm	90-175 mm
最大底卡尺寸 Max. Bottom Reinforce Paper Card(W×L)	144 × 344mm	169-444mm
最小底卡尺寸Min. Bottom Reinforce Paper Card(W×L)	64 × 194mm	84 × 194 mm
底卡纸克重 Bottom Reinforce Paper Card Weight	150-400g	150-400g
生产速度 Working Speed	40-60pcs/min	40-60pcs/min
打孔孔距 Punching Hole Spacing	80mm 120mm 打孔孔距可根据实际需要定制，以上为标准孔距。	100mm 140mm Note: Above punching hole spacing are our standard parameters, which can be customized according to client's requirement.
冲孔大小 Punching Hole Diameter	φ4 φ5 φ6mm	φ4 φ5 φ6mm
设备总功率 Total Power	30KW 380V 50Hz	30KW 380V 50Hz
总重量 Machine Weight	14T	17T
外型尺寸 Machine Dimension(L × W × H)	23000 × 1930 × 1920mm	23000 × 21000 × 1920mm

工作速度由于纸质、纸克重、印刷效果、是否覆膜、胶水种类、纸张尺寸、气候以及做作业车间环境的不同而有所差异。

**Note :** The working speed varies with the paper type, paper weight, paper size, paper laminating or not, paper printing quality, glue quality, air temperature and workshop environment.

RH 系列 series

KL-540RH 全自动卷筒纸袋机

H 系列 series

220H/350H/450H 全自动纸袋机

TB 系列 series

350TB/450TB 方底纸袋机

T 系列 series

220T/350T/450T 自动纸袋机

A 系列 series

220A/350A/450A 自动纸袋机

KL-220/350/450

自动纸袋机